

SPLIT RING HANGERS

» 516 SERIES

SPECIFICATION

Sioux Chief 516 series split ring hangers shall be used where necessary to suspend or support IPS or CTS piping from threaded rod in accordance with national code requirements for light commercial applications. Hanger shall comply with MSS-SP58 Type 12 and WWH-171D Type 25.

MATERIALS

- 516-**GPK2**: galvanized ductile iron
- 516-**CPK2**: epoxy-coated ductile iron

SAFE WORKING LOAD

180 lbs.

DIMENSIONS

Dimensions = Inches.

CTS

Tube size	1/2"	3/4"	1"	1 1/4"	1 1/2"	2"
A: Pipe O.D.	0.625	0.875	1.125	1.375	1.625	2.125
B: Center line	0.69	0.82	0.94	1.07	1.20	1.44

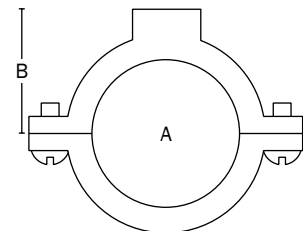
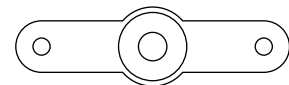
IPS

Pipe size	1/2"	3/4"	1"	1 1/4"	1 1/2"	2"
A: Pipe O.D.	0.84	1.05	1.32	1.66	1.90	2.38
B: Center line	0.82	0.94	1.06	1.23	1.31	1.62

ITEM # SUBMITTED	_____
JOB NAME	_____
LOCATION	_____
ENGINEER	_____
CONTRACTOR	_____
PO#	_____ TAG _____



516-2GPK2



Made in China

Create Item Number

516-AB

e.g. **516-4CPK2**: epoxy-coated split ring hanger for 1" tube.

TUBE/PIPE SIZE **A**

- 2 = 1/2"
- 3 = 3/4"
- 4 = 1"
- 5 = 1 1/4"
- 6 = 1 1/2"
- 7 = 2"

FINISH **B**

- GPK2** = galvanized
- CPK2** = epoxy-coated