

BRACKETING SYSTEM

520 SERIES

Edge™

SPECIFICATION

Sioux Chief 520-E series Edge Bracketing System shall be used where necessary for securing CTS water supply lines vertically or horizontally within a wood or metal 2x4 stud wall. Bracket shall be a galvanized steel, corrosion-resistant, angle bracket with pilot holes. Hole locations on bracket have been designed to align with other clamps such as 2-hole pipe straps, plastic pipe or suspension straps, drop-ear 90 fittings or other devices. Sioux Chief 520-EC series clamps are specifically designed for the Edge bracket.

System shall be approved for use with copper, CPVC, or PEX tube.

MATERIALS

Bracket: 20ga (0.035") steel - galvanized

Clamps: ABS

INSTALLATION

Tabbed ends of bracket may be mounted to the face of the stud or bent to fit within the stud cavity. Perforated bracket corner may be cut and bent to fit inside stud cavities less than 16" on center. Once bracket is secured to stud, install Edge clamp or other clamping device using approved hardware. Edge clamp may be glued to CPVC stub out.

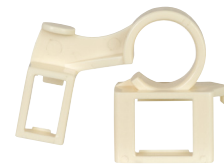
DIMENSIONS

Item:	520-E16	520-E24
A: Length	16.8"	26.8"
B: Height	0.5"	0.5"
C: Hole spacing	0.406"	0.406"
D: Hole diameter	0.125"	0.125"
E: Minimum span	7.8"	17.8"

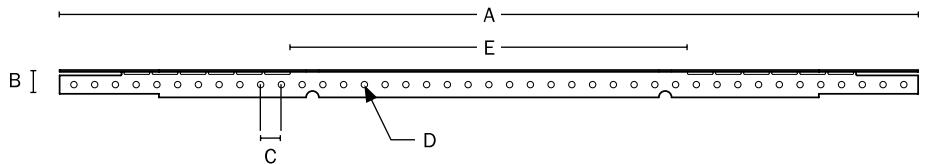
ITEM # SUBMITTED	_____
JOB NAME	_____
LOCATION	_____
ENGINEER	_____
CONTRACTOR	_____
PO#	_____ TAG _____



520-E16



520-EC2



Create Item Number

520-A

e.g. **520-E16:** 16" long galvanized Edge bracket

BRACKET LENGTH A

E16 = Left Inlet (flow to the Right)

E24 = Right Inlet (flow to the Left)

Edge Clamps - Available Separately:

1/2" CTS Clamp: 520-EC2

3/4" CTS Clamp: 520-EC3