

BRACKETING SYSTEM

» 525-WLB SERIES

StrongArm with Shower WallNut LockBlock™

SPECIFICATION

Sioux Chief 525 series StrongArm with Shower WallNut LockBlock™ bracketing system shall be used where necessary for securing 1/2" CTS copper stub outs when penetrating a wall. Bracket shall be corrosion resistant with twisted ends to mount to the surface of wood or metal studs. System shall include approved hardware for fastening brackets to stud wall. System shall include slideable, plastic block device to position and secure shower riser stub out at any desired location within stud cavity. Each block shall include four screws for tightening. When screws on blocks are tightened, compression of blocks prevents lateral movement on brackets and simultaneously compresses on tube to prevent stub out movement. System shall be IAPMO certified.

INSTALLATION

Determine stub out height. Secure top bracket to studs at desired position for shower arm stub out. Slide LockBlock™ across bracket. Insert copper shower riser ell into LockBlock™. Tighten all four screws. As close as possible to each side of block, bend the bottom bracket downward for the most rigid installation. Secure bottom bracket to studs. If desired, ends of top bracket may also be bent similar to bottom bracket for added strength.

MATERIALS

Brackets: 16 gauge galvanized steel

Block: ABS

Screw: #6 x 1" coarse thread, zinc-plated

SAFE WORKING LOAD

25 lbs. at 140°F

*safe working load = 1/2 failure

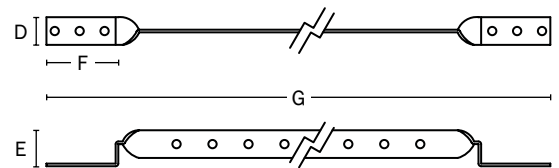
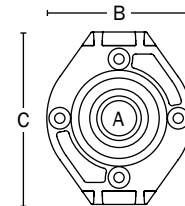
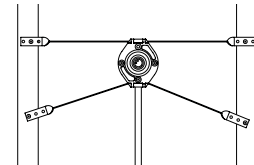
DIMENSIONS

LockBlock		StrongArm	
		For 16" Stub Bay	For 24" Stud Bay
A:	diameter	1/2"	
B:	width	2 9/16"	
C:	height	3"	
D:	height	5/8"	5/8"
E:	offset/depth	1/2"	1/2"
F:	mounting tab	1 1/2"	1 1/2"
G:	overall length	17 1/4"	25 1/4"

ITEM # SUBMITTED	_____
JOB NAME	_____
LOCATION	_____
ENGINEER	_____
CONTRACTOR	_____
PO#	_____ TAG _____



525-16WLB



Made in USA

Create Item Number

525-AWLB

e.g. 525-16WLB: 16" stud bay StrongArm bracket with one Shower WallNut LockBlock™

LENGTH A

16 = For 16" stud bay

24 = For 24" stud bay