

# TRAP PRIMER ADAPTER

## »» 861 SERIES

### SPECIFICATION

Sioux Chief 861 Series coated cast iron trap primer adapter with 1/2" FIP thread side-inlet trap primer connection with removable plug.

For use between infrequently used drainage fixtures and traps to allow inlet of water for priming of traps.

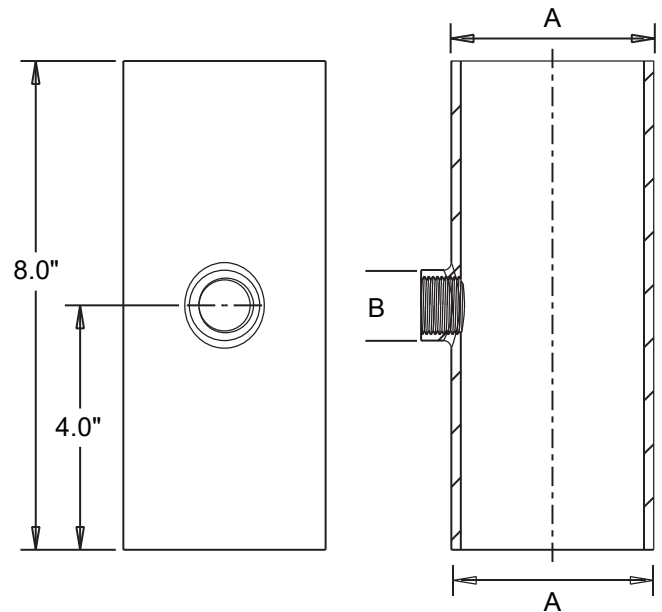
### MATERIALS

Coated cast iron

### DIMENSIONS

**A:** Connection size (No-Hub) 2", 3", 4"

ITEM # SUBMITTED	_____
JOB NAME	_____
LOCATION	_____
ENGINEER	_____
CONTRACTOR	_____
PO#	_____ TAG _____



Create Item Number

## 861-A

e.g. **861-TA23**: Coated cast iron trap primer adapter with 3" No-Hub connection

### CONNECTION SIZE **A**

**TA22** = 2"

**TA23** = 3"

**TA24** = 4"