

CLEANOUT BUSHING WITH PLUG

»» 875 SERIES

SPECIFICATION

Sioux Chief 875 Series cleanout bushing shall be used where necessary in drainage systems. Cleanout shall include an internally threaded body designed for solvent weld connection inside of Sch. 40 ABS/PVC pipe. Slotted, flush-fit cleanout plug shall be removable and provide access to DWV system for inspection/maintenance. Cleanout plug shall include a 1/4-20 threaded brass insert for optional attachment of cover. Body and plug threads shall comply with ASTM F1498-12.

MATERIALS

Bushing body: White or black ABS

Cleanout plug: White or black polypropylene with brass insert

INSTALLATION

Solvent weld inside of Sch. 40 ABS or PVC pipe using appropriate solvent cement, according to manufacturer's instruction. Apply lubricating thread sealant approved for use with plastic to plug threads.

DIMENSIONS

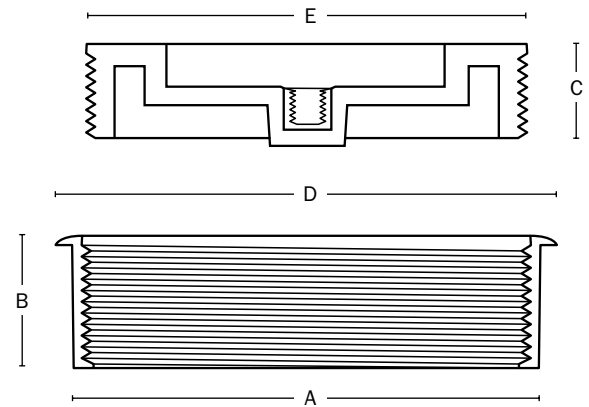
A: Connection*	Inside 2"	Inside 3"	Inside 4" Sch. 40 pipe
B: Bushing height	7/8"	1"	1 1/8"
C: Plug thickness	3/4"	7/8"	7/8"
D: Bushing diameter	2 3/8"	3 1/2"	4 1/2"
E: Plug size	1 1/2"	2 1/2"	3 1/2"

*The inside diameter of pipe can vary significantly.
Bushings are designed to fit inside most, but may not fit all 4" pipe.

ITEM # SUBMITTED	_____
JOB NAME	_____
LOCATION	_____
ENGINEER	_____
CONTRACTOR	_____
PO#	_____ TAG _____



875-4P



Choose Item Number

875-AB

e.g. **875-4P:** White cleanout bushing for inside 4" PVC connection

CONNECTION SIZE **A**

- 2** = Inside 2" pipe
- 3** = Inside 3" pipe
- 4** = Inside 4" pipe

COLOR **B**

- A** = Black for ABS
- P** = White for PVC