

CPVC TRANSITION FITTINGS SCH. 40 - ASTM F438

646-CG9 SERIES

SPECIFICATION

Sioux Chief ASTM F438 CPVC transition fittings shall be used in plumbing systems for safe distribution of hot or cold water. Fittings shall be used for water supply to plumbing devices and fixtures. Transition fittings shall be listed to appropriate standards including ASTM fitting end specifications.

MATERIALS

Plastic: CPVC

Brass: No Lead, Dezincification (DZR) resistant
Stress Corrosion Cracking (SCC) resistant

O-ring: EPDM

MAXIMUM TEMPERATURE

180°F

CERTIFICATIONS

cUPC, FGG/BM/CZ system compatible

SYSTEM COMPATIBILITY

Size	Tube Standard	Tube Burst Pressure	Fitting Standard	Fitting Burst Pressure
1/2"	ASTM F441	1910 PSI	ASTM F438	1910 PSI
3/4"	ASTM F441	1540 PSI	ASTM F438	1540 PSI

INSTALLATION LIMITATIONS

Do Not expose CPVC transition fitting to heat above those listed on tubing. Excessive heat will damage the integral o-ring seal. Do not install damaged fittings. Do not alter fittings. Do not solder or braze in close proximity to fitting unless it is protected with a heat-blocker to protect/keep the fitting under 180°F. Keep fitting free from hazardous chemicals or chemical vapors.

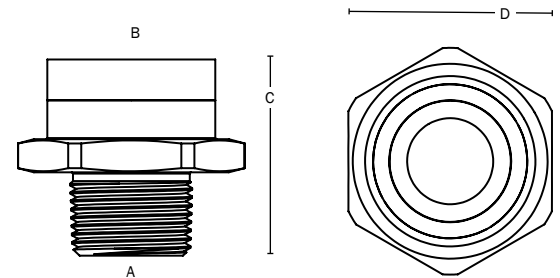
DIMENSIONS

	'CG92'	'CG93'
A: MIP thread connection	1/2"	3/4"
B: CPVC Sch. 40 socket connection	1/2"	3/4"
C: Overall height	1-9/16"	1-11/16"
D: Overall hex width across flats	1-3/8"	1-3/4"

ITEM # SUBMITTED	_____
JOB NAME	_____
LOCATION	_____
ENGINEER	_____
CONTRACTOR	_____
PO#	_____ TAG _____



646-CG93



Create Item Number

646-CG9A

e.g. 646-CG93: 3/4" CPVC socket x 3/4" MIP

CONNECTION SIZE A

2 = 1/2" Sch. 40 CPVC socket x MIP

3 = 3/4" Sch. 40 CPVC socket x MIP